

A



Z



**WESTFALIA**

**An A—Z Guide  
For The Modern  
Adventure(er)**





# CONTENTS

A  
B  
C  
D  
E  
F  
G  
H  
I  
J  
K  
L  
N  
O  
M  
P  
Q  
R  
S  
T  
U  
V  
W  
X  
Y  
Z  
  
\*

Adventure Awaits	3
B is Better: Class B Motorhomes	4
Choice: Wave + Wave Pop-top + Wave SRT	8
Diagrams, Dimensions, and Design	12
Energy to Spare: Unlimited Exploration	16
Flexibility: Versatility and Comfort	18
Get Back to the Great Outdoors	19
Happy + Handy: Build and Features	20
Interior Design: Decor and Finishes	22
Journey In Comfort: Feature Comforts	24
Kayaks to Kettledrums: Room To Pack and Play	26
Lay back & Look Up: Skylight	28
Mobility: Navigating Adventure	30
National Parks Await	31
Our Pack: The Westfalia Community	32
Pop Top And Peace Out	34
Quality: It Makes a Difference	36
Rear Bed Flexibility: Sleeps 6	38
Small / Subtle / Smart: HVAC	40
Tints, Tones, and Trim	42
Under the Hood: A Loaded Chassis	44
Vistas: Smart Windows	46
Water: Huge Fresh Water Holding Tank	48
X-factors: What Set Westfalia Apart	49
Years of Worry Free Driving: Road Side Warranty	50
Zion To Zoo York	52
Specifications	54

Imagine living a life without limits... You can in a Westfalia, an iconic brand that represents the spirit of adventure and exploration and built on a platform of quality and well designed features.

With a deep history in travel and outdoor exploration, the new Westfalia is a blend of nostalgia and innovation. Premium quality and timeless vehicles empower our tribe to experience freedom on the open road.

Westfalia is built for modern adventurers like you. Those who seek authentic experiences no matter where the open road may take you. Adventure Awaits.



ADVENTURE AWAITS



## CLASS B IS...

Why do our fellow adventurers flock to Class B camper vans? It's simple: they offer the ultimate blend of flexibility, efficiency, and just pure fun. The Westfalia isn't just a vehicle; it's your passport to spontaneous adventures and epic road trips.

Our vans dance through city streets with ease, letting you explore the urban jungle and then head off to the secluded, scenic spots others only dream of reaching. With superior fuel efficiency, you can stretch your budget further, giving you more to spend on those unforgettable experiences.

Equipped with all the essential comforts like kitchens and bathrooms, our camper vans are your cozy home on wheels. Whether you're heading to the mountains, the beach, or just across town, the Westfalia is your trusty sidekick. It's not just a ride; it's a lifestyle. So go ahead, embrace the nomadic spirit and live life the Westfalia way.

- Zip where bigger RVs can't dream
- An absolute blast to drive
- Turns on a dime
- Better fuel economy
- Parks anywhere (Malls, Casinos, Events, Driveways)
- Serious towing muscle (3,500 lb hitch receiver rating)
- Super versatile for all your outdoor escapades
- Your everyday ride - multi-functional marvel • High resale value



# BETTER

# A LEGENDARY

# JOURNEY CONTINUES



1844

Established in 1844 by Johann Bernhard Knöbel, Westfalia began as a forge crafting heavy horse-drawn carts. However, the iconic journey truly began in the 1950s.



1951

When a British Forces officer requested the conversion of a Volkswagen transit van into a mobile home, the Westfalia Camping Box was born. This innovative design paved the way for Westfalia's enduring legacy in vehicle conversions. The Camping Box, based on the VW Type 2 Bus, became a favourite of American servicemen stationed in Europe, who brought these versatile campers back to the US.



1960

The SO 34 motorhome was introduced, with its practical amenities and folding roof that dramatically enhanced space and comfort. This model achieved great commercial success in America.



1970

In the 1970s, Westfalia launched the Mercedes-Benz "James Cook," followed by models like the "Sven Hedin" and the "Joker," which made camper vans accessible to many households. These campervans became popular in North America for camping and outdoor activities, sold through Volkswagen dealerships.



1980

Successful collaborations with Volkswagen and Ford introduced popular models like the VW Joker and the compact Nugget. Westfalia became synonymous with outdoor adventure for a generation of active families and thrill-seekers.



1990

The good times continued rolling with the debut of iconic models such as the VW California and Mercedes-based Marco Polo. These vehicles were both a celebration of Westfalia's 150th anniversary and proof that our bold spirit would prevail into a new millennium.



2001

Westfalia was acquired by DAIMLER AG (Mercedes-Benz), which led to the end of the collaboration with Volkswagen. This marked a bittersweet sunset for Westfalia's commercial presence in the North America market... but our sun will rise again!



2010

Revitalized for Europe under the RAPIDO Group, Westfalia focused on market-oriented development with new models like the Amundsen and Kepler, alongside the expansion of production facilities in France and Germany.



2024

Told you we'd be back! Westfalia continues to symbolize adventure and freedom worldwide and now, produced in Ontario, Canada by Roadtrek Inc., Westfalia makes its must-anticipated return to the North America market with the launch of the 2024 Westfalia Wave.

A LEGACY OF INNOVATION:  
ROADTREK AND RAPIDO

Today Group Rapido leads the relaunched Westfalia across North America. Rapido is a pioneer in the RV industry, and known for its innovative spirit and many industry firsts. This partnership brings Westfalia into a lineage of excellence while sharing a passion for customer satisfaction, top-notch quality, and meticulous attention to detail.



CHOICE

C

Embark on an unforgettable adventure and ride the award-winning Westfalia Wave. Get ready for a groovy ride that will take you from home-sweet-home to your new home on the open road.

If you can find it on a road map, you can get there in the Wave. The Pop Top model combines superior comfort, style, performance, and the thrill of the open road.

WAVEPOP-TOP



SLEEPS UP TO 6  
STORAGE 30 CU FT  
LENGTH 20'9" (6,325 MM)

WAVE SKYLIGHT



SLEEPS UP TO 4  
STORAGE 30 CU FT  
LENGTH 20'9" (6,325 MM)

WAVE SRT



SLEEPS UP TO 4  
STORAGE 15 CU FT  
LENGTH 19'7" (5,969 MM)

POP TOP & DE-ACE OUT



WESTFALIA WAVEPOP-TOP

Experience the largest space in the class with the pop-up solution that brings a new dimension to your road travel adventures

SLEEPS UP TO 6	STORAGE 30 CU FT	TRAVEL CAPACITY 4	LENGTH 20'9" (6,325 MM)	HEIGHT 9'5"	CHASSIS RAM PROMASTER 3500 159" EXT
----------------	------------------	-------------------	-------------------------	-------------	-------------------------------------

Ultimate Sleeping Flexibility

The Westfalia Wave Pop-Top lets you invite more friends and family to your outdoor adventures, with the same comfort and convenience. The spacious pop-up design features an extra mattress and more space to play, relax, and re-energize. Hit the road, pop the top, and expand your travel experience. It's about making the road your perfect home, whether you're camping in the wilderness or exploring the coast.





# LAY BACK & LOOK UP



## WESTFALIA WAVE SKYLIGHT

Let natural light brighten your space from above, offering a glimpse of the sky and enhancing your sense of freedom on every journey.



SLEEPS  
UP TO 6



STORAGE  
30 CU FT



TRAVEL  
CAPACITY 4



LENGTH  
20'9" (6,325 MM)



HEIGHT  
9'5"



CHASSIS  
RAM PROMASTER  
3500 159" EXT

### Open Roads Beneath Open Skies

The Westfalia Wave Skylight is more than just a camper van—it's a gateway to new vistas of adventure! Its feature skylight will expand your horizons while you seek freedom and exploration. Go out, look up, and experience life from a epic perspective. It isn't just about going places — it's about making the road your perfect home, whether you're camping in the wilderness or exploring the coast.



# FIT ANY WHERE



## WESTFALIA WAVE SRT

With a shorter chassis, the Wave SRT is designed for effortless maneuvering, making parking and navigating tight spaces a breeze.



SLEEPS  
UP TO 4



STORAGE  
15 CU FT



TRAVEL  
CAPACITY 4



LENGTH  
19'7" (5,969 MM)



HEIGHT  
9'5"



CHASSIS RAM  
PROMASTER  
3500 159" EXT

### Open Roads Await

The Wave SRT isn't just a camper van—it's your ticket to freedom. With its compact design, it's the perfect vehicle to explore new destinations, offering a fresh perspective on every journey. Go further and experience life from a new point of view. Turn every journey into a luxurious adventure with a perfect blend of comfort and mobility, whether you're exploring the countryside or cruising along the coast.





WHAT'S INSIDE

Modern luxury amenities push practicality and livability to a new level of convenience.

Adjustable Table

Swivel, slide and stow with a versatile table that fits your flow.

Wet Bath

A fully integrated shower and toilet in one smart, space-saving design.

Front Flip Bench

Converts effortlessly from extra seating to a comfortable sleeping space.



Rear King Bed

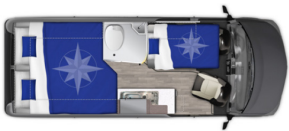
Full-width design offers ample space to sleep, stretch, and unwind.

Fridge

Keep your food fresh and drinks cold with a sleek, efficient refrigerator.

Propane Stove

Dual burners deliver reliable cooking power wherever you roam.



Sunny Days

The daytime floorplan is roomy and versatile, for a space that indulges comfy relaxing and dining, with ample seating and storage.





DIAGRAMS

Dreamy Nights

At night, the space transforms into a cozy and secure haven, complete with plush bedding, thoughtful privacy features, and ample room for a restful sleep.



# DIMENSIONS

Length	0 2 4 6 8 10 12 14 16 18 20 22																		24
Model																			
Pop-Top Skylight																			20'9" (6,325 mm)
Pop-Top Skylight																			20'9" (6,325 mm)
SRT																			Length 19'7" (5,969 mm)
SRT																			Length 19'7" (5,969 mm)



# DESIGN

Get swept away by the new Wave — this is your passport to challenge the horizon and embark on a lifestyle powered by adventure.



**1. SPACIOUS POPTOP** 4' peak ceiling clearance and oversize 52"x79" mattress.



**7. REAR BED FLEXIBILITY** Maximize sleeping space needs versus storage needs.



**2. LOADED CHASSIS** Maximum safety and premium customer conveniences.



**6. TRUNK STORAGE** Leave nothing behind, supply every adventurous adventure.



**5. HUGE WATER CAPACITY** More water when you need it, with less frequent refilling.



**4. BENCH VERSATILITY** Patented seat design easily converts to additional sleeping.



**3. ENERGY TO SPARE** Plan your agenda with your van, not in spite of your van.

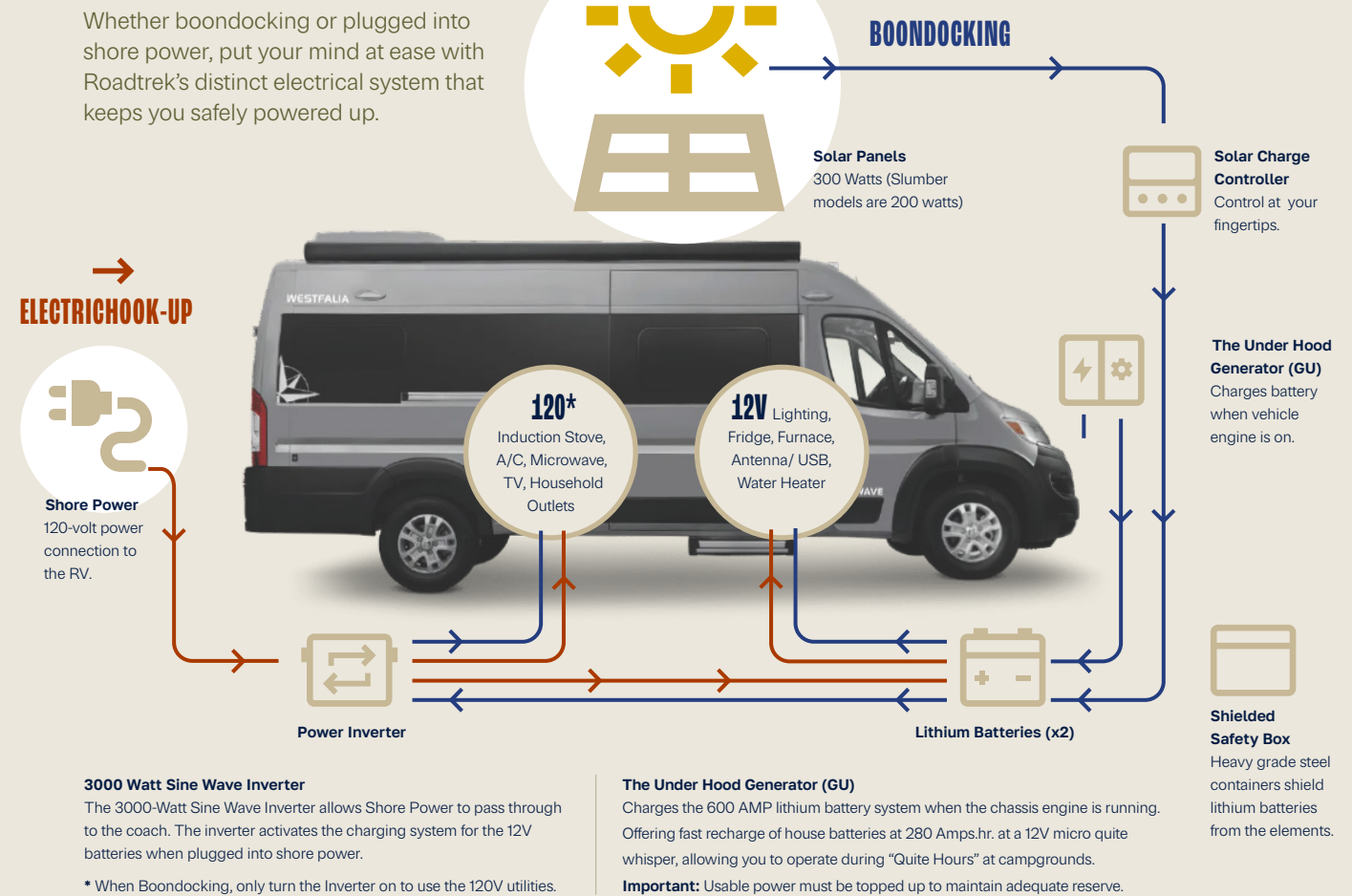
YOUR FAVORITE **WESTFALIA** ALL GROWN UP



ENERGY (TO SPARE)

# KEY

## UNLIMITED EXPLORATION



									
Home	Climate Control	Water Pump Tank Levels	Furnace	Settings	Power Status	Power Awnings	A/C	Lights	Fan



### The Magic of Firefly

The on-board operating system provided by Firefly Integrations allows ease of use when monitoring tank levels, operating lighting, battery system, HVAC, and system diagnostics conveniently with the simple touch of a button. Plus, take convenience to the next level with the mobile app, allowing you to monitor temperature and control lights remotely, ensuring comfort and convenience are always at your fingertips.





# FLEXIBILITY

## Passenger Bench Versatility – Comfort Meets Convenience

Our multipurpose passenger bench is all about adaptability. Equipped with child seat restraint anchors, comfy headrests, and comfort-formed seat cushions, traveling in a Westfalia is a pleasure for everyone. The patented Westfalia seat design effortlessly converts into additional sleeping space. When the bed isn't needed, it folds away swiftly, transforming back into a cozy bench seat. Seamlessly switch between seating and sleeping configurations.

### Safe Travels:

Extra passengers can ride securely, thanks to our child seat restraint anchors.

### Utility Sleeping Space:

Easily switch from seating to sleeping, providing extra sleeping space when needed.

F



Step away from the demands of modern life and embrace the great outdoors. Westfalia allows you to reconnect with nature, and rejuvenate both mind and body amongst the natural wonders of the world. Slow down, look up, and experience the greatness of the great outdoors.

GREAT

THE

OUTDOORS







### Safe Travels:

Extra passengers can ride securely, thanks to our child seat restraint anchors.



### Insulation Beyond the Norm:

At Westfalia, we don't just insulate—we perfect it. Our precision-cut poly resin insulation is expertly bonded to the chassis for a seamless fit that stays put, offering unmatched acoustic tranquility and thermal bliss.



# HAPPY



### Ease of Operation:

Big buttons, clear functions. Oursystem is designed for easy readability and intuitive use, giving you instant feedback on every function.



### Effortless, Concealed Convenience:

Westfalia redefines waste management with smart, concealed solutions. Our gravity feed system and cassette toilet are designed for ease and cleanliness, keeping your van tidy and hassle-free.

# HANDY

### Power Entry Coach Side Doorstep:

Step into ease and safety with our Thule premium step system. Featuring wide, non-slip treads and automatic deployment, it's perfect for both you and your furry companions.



### Roll-Up Awning:

Chill out in the shade at the push of a button. Our Firefly-powered roll-up awning is easy to operate and perfect for creating your own outdoor oasis.



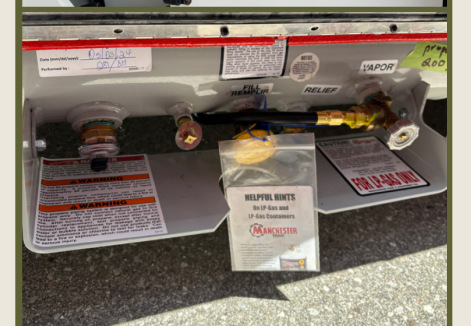
### Outdoor Shower:

Rinse off muddy paws or sandy gear with our convenient outdoor shower. Perfect for keeping your adventures clean and fresh.



### Propane Tanks:

Stay fueled with our 25L/30LB LP tank featuring an exterior quick connect. Whether you're cooking up a storm or powering your gear, this propane tank has you covered.





# INTERIOR



## EURO CHIC: WESTFALIA'S SMOOTH UNIQUE DECOR

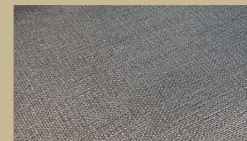
### Step into the Westfalia Wave

Experience a new standard in motorhome decor, distinctly different from the typical American coach.

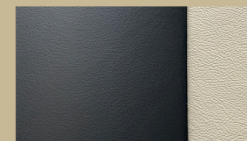
With Euro styling of the Westfalia Wave brings modernity, warmth, and functionality together in a way that sets it apart.



### Décor Finishes



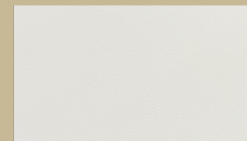
Bedding Upholstery



Seating Leatherette



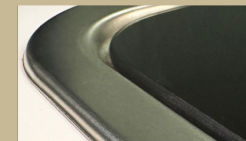
Cortona Grain Cabinetry



Cabinetry / Counter top



Flooring



Kitchenette

Our interior features sleek lines, monochromatic graphite accents, and pristine white seat covers, creating a sophisticated and contemporary look. The Westfalia Wave boasts warm wood tones, beautifully crafted joints, and high-quality clasps. Every drawer glides effortlessly, and every surface is designed with both form and function in mind.

The interior is not just beautiful but also inviting and practical, ensuring you feel right at home, no matter where your adventures take you.

Embrace the unique Euro styling of the Westfalia Wave – a modern, cozy, and functional space that reflects your adventurous spirit and love for good design.

# DESIGN



# U

## JOURNEY IN COMFORT

## FEATURE COMFORTS



### Compact Dining, Big on Comfort

The sleek dinette table and adjustable seating create the perfect spot for meals, morning coffee, or planning your next big adventure, right from the comfort of your van.



### Smart Storage, Always Within Reach

Thoughtfully designed kitchen drawers keep your snacks, cooking essentials, and utensils organized and easy to access.

### A Cozy Night's Sleep, Anywhere

The convertible bed system offers plush comfort and flexibility, transforming your space into a peaceful retreat at the end of every adventure-filled day.



### Cool Convenience, On Demand

A spacious, energy-efficient fridge keeps your food and drinks perfectly chilled, so you're always stocked and ready for the next stop on your journey.

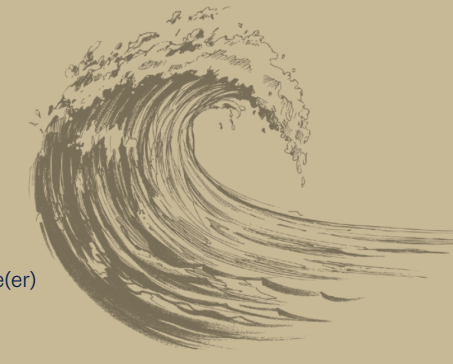
### Hidden Storage, Maximum Space

Lift, store, and stow with ease, ample under-bed storage ensures all your gear has a place, keeping your living space clutter-free and adventure-ready.



### Compact, Complete Wet Bath

Freshen up anytime with the fully equipped wet bath, featuring a shower, toilet, sink, and a smartly placed window for natural light and ventilation.





# KAYAKS TO KETTLEDRUMBS



## Intentional Storage:

Stow your gear with style and ease. From steps to alcoves, sidewalls to versatile trunk space, we’ve designed every inch of your Westfalia for your adventurous lifestyle.



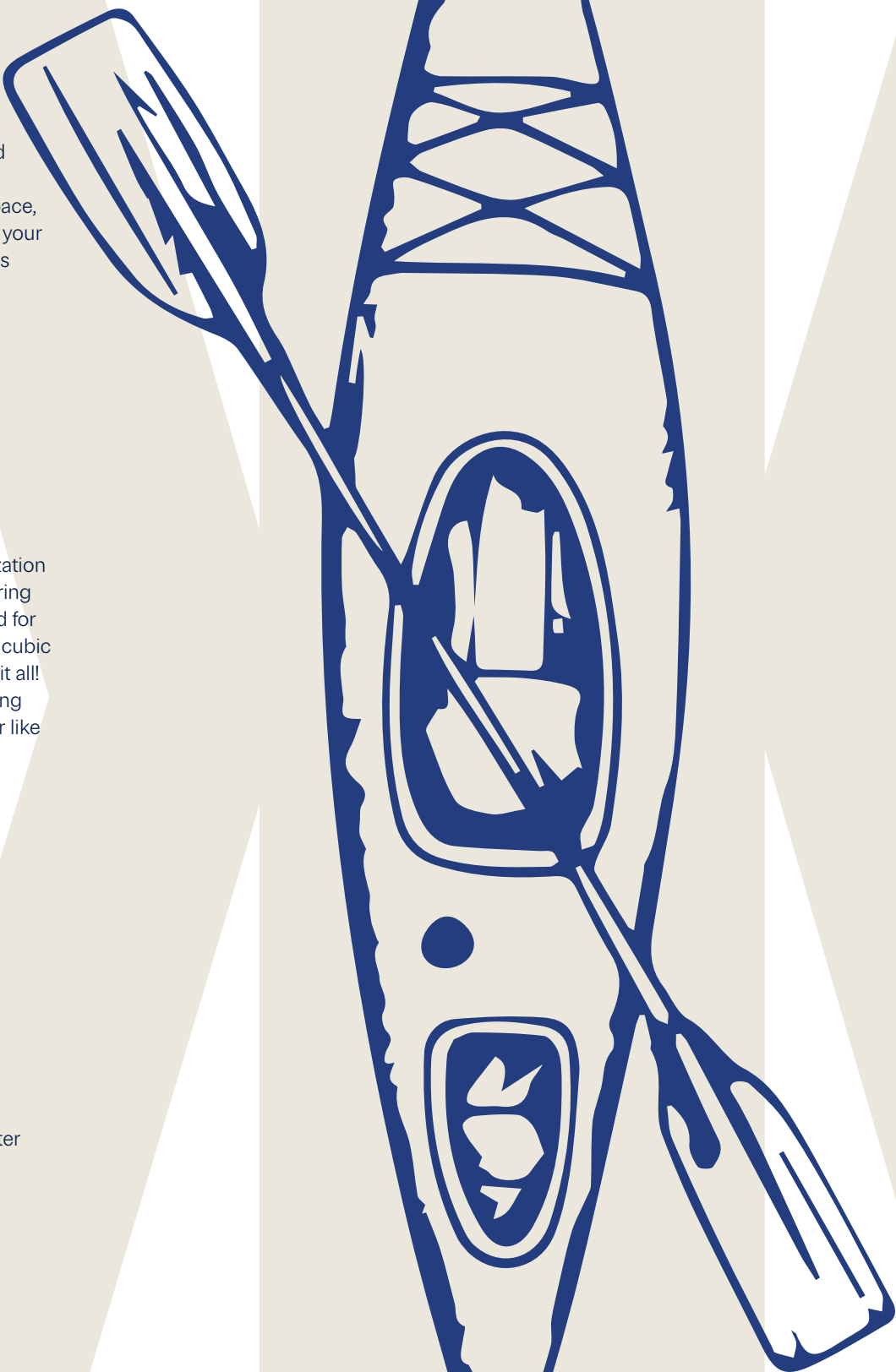
## Ample Trunk Storage:

Unleash the power of organization with our versatile trunk, ensuring you have everything you need for your epic journeys. With 300 cubic feet of storage, you can pack it all! The trunk is perfect for stashing larger items and outdoor gear like totes and mountain bikes.



## Throughway Storage:

Ideal for longer items, our throughway storage lets you easily fit blow-up kayaks and paddle boards down the center aisle of your coach.



## Rear Bed Storage:

The elevated bed design provides ample storage underneath, ensuring you have plenty of room for your gear and essentials.



## Rear Door Bug Screen with Storage Pockets:

Roll up and roll out with ease. The rear doors feature a roll-up bug screen with handy storage pockets, making your adventures even more convenient.



## Bathroom Storage:

Stay organized with our cleverly designed inlaid storage spaces. Safely stow toiletries and trinkets, keeping clutter at bay while ensuring everything is at your fingertips when you need it.





# LAY BACK



# LOOK UP

Let natural light brighten your space from above, offering a glimpse of the sky and enhancing your sense of freedom on every journey.

The skylight floods the interior with natural light, creating a bright and welcoming atmosphere. It also provides additional ventilation, allowing fresh air to circulate throughout the vehicle.

Whether you're enjoying the great outdoors or relaxing inside, the skylight ensures you stay connected with nature.







**FOR THE  
MODERN  
ADVENTUR(ER)**



**NAVIGATE  
THE CITY  
WITH EASE**

**M**

**MOBILITY**

**EFFORTLESS  
URBAN  
ADVENTURES**



**CAR-LIKE  
DRIVING  
EXPERIENCE**



**YELLOWSTONE**



**YOSEMITE**



**N**

**NATIONAL**

**PARKS**



**BANFF**



**GLACIER**





# OUR

### Iconic Spirit

Think back and you'll remember us. It's actually kind of a big deal that the iconic Westfalia brand is redefined for a new generation of free spirits and outdoors thrill seekers.

### New Experiences

Westfalia embodies a culture of adventure and camaraderie, where every road leads to new friendships and shared experiences. It's a place where unforgettable memories emerge from epic vistas.

### Cultural Legacy

Steeped in a rich cultural heritage that is beloved across North America, Westfalia embodies a legacy of exploration and community. Today, we're reigniting this tradition by forging a new community, Westfalia—Our Pack.

# PACK

### Modern-Day Nomads

Do you have the itch to explore? Join Our Pack of like-minded wanderers who understand the thrill of the open road and the joy of discovering new places.

### Shared Adventures

From coast-to-coast, Westfalia owners come together at gatherings and events that celebrate the spirit of camper van life. Share stories, soak up inspiration, and celebrate friendships that last a lifetime.

### Belonging Everywhere

With Westfalia, wherever you roam, you feel like you belong. Our Pack is your home base, offering support, camaraderie, and endless opportunities for adventure.

**A place where every journey feels like coming home.**

# YOUR ADVENTURE







**Spacious & Comfortable:**

Enjoy a 49" peak ceiling clearance and the largest mattress in the industry, ensuring plenty of room and a restful sleep.



**Bright & Rain Panel:**

Featuring three large zippered windows/screens, an adjustable brightness LED light strip, and a ceiling skylight/vent with a screen and night shade.



**Quality Craftsmanship:**

Our pop-tops are crafted with premium materials, including custom-stitched canvas, and provide ample ventilation and natural light.



**Stay Connected:**

The functional USB charge tray and LED light strip add to the comfort of this spacious second-floor accommodation.



**Easy Setup:**

Enjoy a quick and easy set-up so you can turn in any time you want.

Not quite this tall, but close!



Experience the largest space in its class with the Westfalia pop-top,

52" x 79" ceiling and our offer and premium ship

P

o

p

t

a

p

Durable, custom-stitched canvas. Premium quality materials and mechanics. 49" of spacious second-floor accommodation.

Ample ventilation & light.



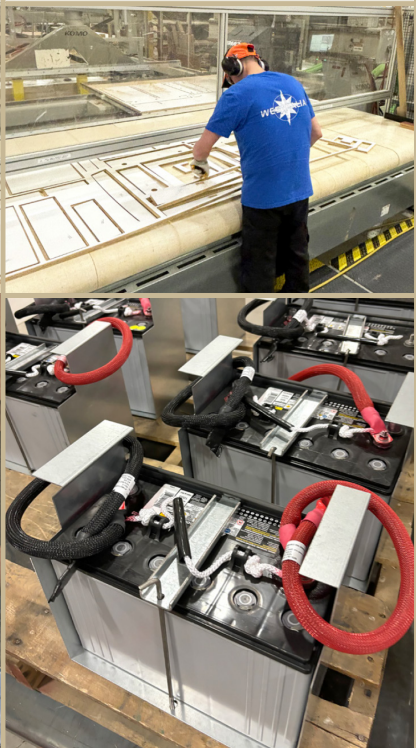




# MAKES A

All Westfalia models are rigorously inspected during every stage of assembly ensuring they meet your standards of reliability and durability. From the smallest of brackets to electrical and water/waste management systems, engineering is at the forefront of Roadtrek products.

# DIFFERENCE



# QUALITY

## Certified for Your Peace of Mind:

Rest easy knowing our insulation is rigorously tested and certified for automotive and RV standards, guaranteeing durability and reliability wherever the road takes you.

## CNC Precision and Consistency:

State-of-the-art CNC technology ensures each part is crafted with unparalleled accuracy and reliability.

## Crafted for Longevity:

From bonding techniques to precision fittings, every aspect is designed to enhance structural integrity and provide a solid foundation for your Westfalia Wave, ensuring years of reliable performance.

## Modular Cabinet Construction:

Versatile and stylish, our cabinets are designed for maximum functionality and aesthetic charm.

## In-House Research and Development:

Our in-house R&D team pioneers new ideas and technologies, ensuring each Westfalia sets new standards in style and function.

## Vacuum-formed Plastic/ABS Components:

Precision meets durability in every component, ensuring longevity and aesthetic appeal.

## Pure Sine Wave Inverter:

Enjoy cleaner power that's safer for sensitive electronics, reducing stress and heat to your devices, allowing them to operate as designed.

**Excellence in Detail:** At Westfalia, meticulous attention to detail, safety, and industry codes defines our approach to plumbing and electrical systems.

## Superior Electrical Connections:

We rely on the best—Wieland's positive latching wiring harness system—to guarantee stable and error-free electrical connections. This advanced technology ensures clear paths for electrical currents, enhancing reliability and performance.

## Smart Battery Management:

With a master battery kill switch, your Westfalia is equipped to prevent battery discharge during storage or when not in use. It's a small detail that makes a big difference in maintaining peak performance.

## Precision Testing Process:

This meticulous process of submerging and testing the completed tank assembly ensures the integrity and reliability of your plumbing system.

## One Or Two Words:

Keep your accessories within reach with USB charging ports and a handy travel tray for organized storage.

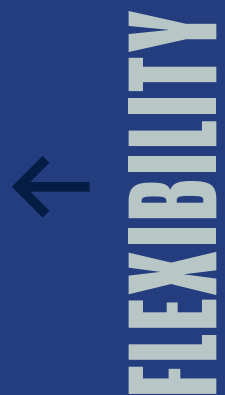
## Solar Power:

Streamlined rooftop solar panels deliver 300 watts (200 watts for pop-top models) of power to fuel your every adventure.

## Eco-Friendly Efficiency:

Our CNC mapping optimizes each sheet of material, significantly reducing waste and championing our commitment to environmental sustainability.





## REAR BED

### 4-Inch Thick High-Density Foam Mattress Cushions:

Enjoy exceptional comfort with our high-density foam mattress cushions, designed for easy storage and quick adjustment of the rear space.



Westfalia Americas

### Efficient Use of Space:

The elevated bed design provides ample storage underneath, ensuring you have plenty of room for your gear and essentials.

### Adaptable Sleeping Comfort:

Efficient use of available space allows for adaptable sleeping arrangements, ensuring everyone can rest easy after a day of exploring.



**ZZZZZZZZZZZSLEEPS ZZZZZZZZZZZ**



**Top-Tier Comfort with Truma Appliances**

When it comes to climate control, Westfalia doesn't mess around. We've teamed up with Truma, the gold standard in HVAC, to ensure you stay chill in the heat and toasty in the cold.

**Combi Eco Plus – Combo Furnace/Water Heater**

Meet the heavyweight champ of comfort. This bad boy packs a punch with over 90% energy efficiency, giving you maximum warmth and hot water with minimal noise.

**Aventa Eco - A/C:**

Say hello to the coolest cat on the block. The Aventa Eco keeps your space perfectly balanced and blissfully quiet, after all that adventure you need a good nights sleep.

**Cool & Quiet:**

Choose your chill level—low, medium, or high. Chill vibes only. Cooling, dehumidification, night mode, and more.

**Key Features:**

- Energy Efficiency: Flex those eco-muscles with over 90% efficiency.
- Stainless Steel Water Tank: Built to last, just like your adventures.
- Space-Saving: Two-in-one magic to keep your van clutter-free.
- Silent Operator: So quiet, you'll forget it's even On.



Comfort Zone Westfalia Americas

**All-in-One Comfort**

The Truma Combi Eco combines efficient heating and hot water in a single, space-saving unit, keeping you warm and comfortable no matter the climate.



**Control at Your Fingertips**

Easily adjust your ideal temperature with the intuitive digital thermostat, delivering precision comfort at your fingertips.



The Truma Aventa creates the perfect balance of temperature and humidity while minimizing noise and conserving energy.

Welcome to Your





TINTS, TONES & TRIM



Full Body Exterior Paints

Choose from Westfalia’s vibrant palette of colors to personalize your adventure. Whether you prefer the timeless elegance of Bright White, the sleek modernity of Silver Metallic, or the bold statement of Cherry Red Crystal, each color is crafted to reflect your unique style and spirit of exploration.

Westfalia models feature custom full body exteriors where body panels, bumpers, awnings, and A/C covers are meticulously clear coat painted to match the overall appearance of the van. This attention to detail creates a vibrant, easy-to-clean look that transforms the van into a standout travel vehicle, perfect for making a statement wherever you go.

STANDARD



Bright White



Silver Metallic



Granite Metallic



Ceramic Grey



Cherry Red



Spitfire Orange



DARK MODE



Standard



Black Accent Package

Optional Black Package

Enhance your Westfalia with the optional Black Accent Package, designed to add a touch of rugged sophistication. Featuring black grille, rims, and body trim, this package transforms your van into a bold statement of adventure. It’s the perfect complement to your selected paint colour, elevating your style on and off the road.

The optional Black Accent Package includes grille, rims, and body trim. Not available with exterior accent paint options. Replaces full body painted moldings.

A CLOSER LOOK Sample exterior paint options for both the Standard or Black Accent Packages.



Bright White



Silver Metallic



Granite Metallic



Ceramic Grey



Cherry Red



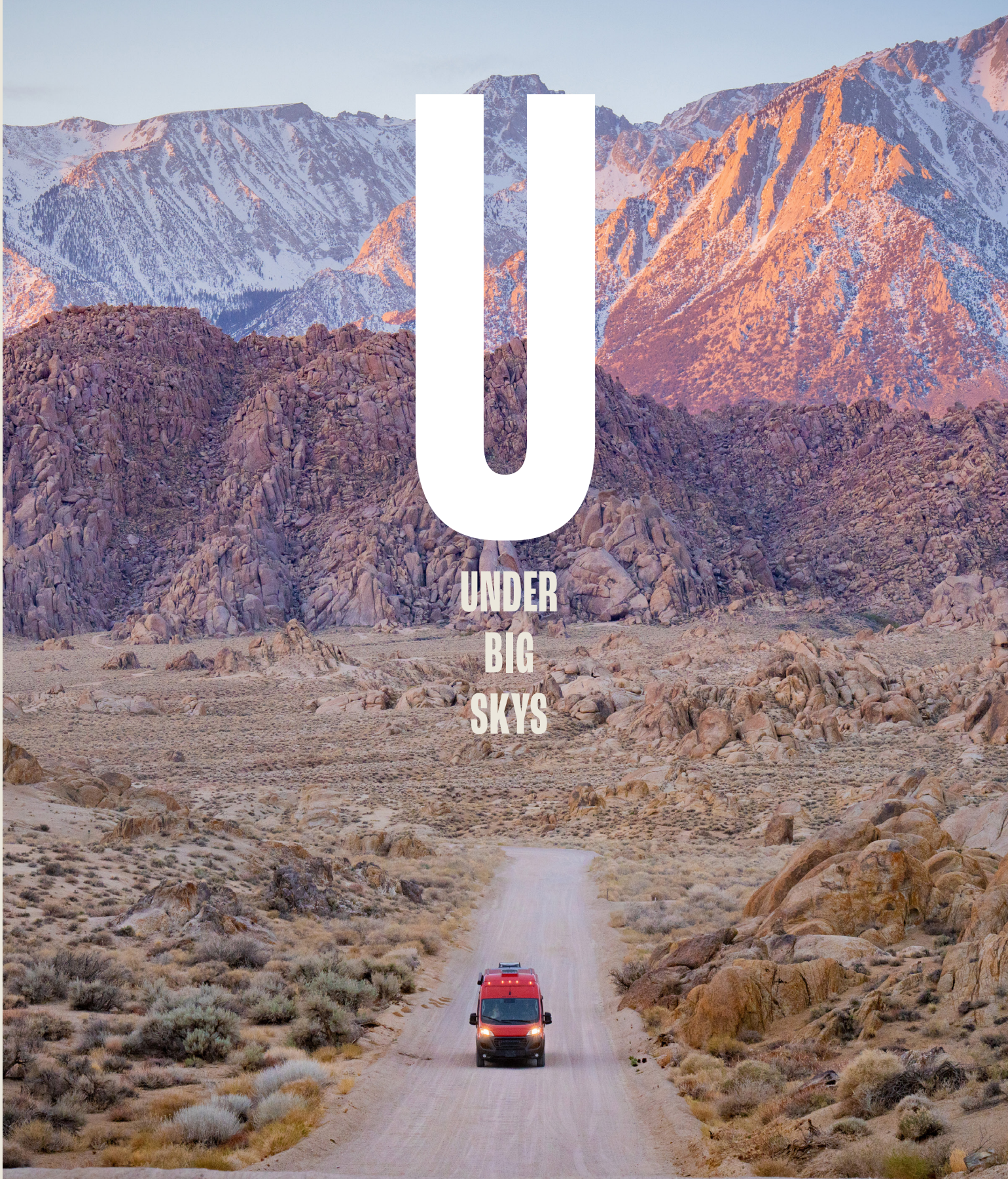
Spitfire Orange





The RAM Promaster chassis provides a smooth, comfortable ride that offers flexible maneuverability. From the seasoned driver to the cautious first timer, every driver will feel confident navigating the open road, inner city driving and even fitting into that seemingly impossible, everyday parking space.

- Park Assist
- Adaptive Cruise Control w/Stop & Go
- Driving Assist
- 360 Surround View Camera
- Lane Departure Warning Plus
- Blind Spot and Cross Path Detection
- Collision Warning
- Power Heated Mirrors
- Remote Start
- Tire pressure Monitoring







## VISTAS

Westfalia's windows aren't just for looking through — they're for living through. Enjoy unbeatable views, breezy ventilation, and top-notch privacy with our innovative window Designs.

**Acrylic Awning-Style Dining Window:**

Stay cool with exceptional thermal and acoustic insulation. This awning window opens wide for unobstructed views and perfect photo ops. Privacy shades and cross-ventilation bug screens come standard, keeping things comfy and private.

**Coach Side Door Bug Screen:**

Keep the bugs out and the good vibes in. Our sliding bug screen on the coach side door is perfect for letting fresh air in while containing your furry friends.

**Rear Door Bug Screen with Storage Pockets:**

Roll up and roll out with ease. The rear doors feature a roll-up bug screen with handy storage pockets, making your adventures even more convenient.

**Skylight Model:**

Dream big with our large 27" x 20" skylight. Double-glazed acrylic top, 60-degree opening, shade and fly screen, and gas strut operation with a positive lock. Let in the sunshine and starlight for a truly magical experience.

**Bathroom Window:**

Shower with a view and a breeze! Our bathroom window allows for ventilation and privacy, ensuring you stay fresh and comfy.





# WATER



35

GALLONS

265

OR PLASTIC BOTTLES

## HUGE Fresh Water Holding Tank Capacity:

Experience the freedom of more water when you need it, with less frequent refilling. Westfalia leads the way with an industry-leading 35-gallon fresh water tank and a 26-gallon grey water tank.

## Stay Longer, Play Harder:

Our massive fresh water holding capacity ensures longer-term self-sufficiency when dry camping. Enjoy fewer visits to waste management and fresh water fill stations, letting you stay off-grid and explore more.

## Smart Concealment:

Our tank is strategically hidden, seamlessly integrating into the coach's interior design.

## Convenient Cassette Waste Tank:

Westfalia also features the convenience of a cassette waste tank system, making waste management easier and more Efficient.

## Keep Going:

Embrace the adventure with the assurance that you have the water capacity to keep you going, no Westfalia Americasmatter where the road takes you.

**“IT CHECKED EVERY SINGLE BOX FOR US. THE DESIGN IS SO SMART.”**

Rose & Stuart C.  
Weaverville, NC, USA

## Sleeps Up To 6

Westfalia's patented bench/bed combi when used in conjunction with the Pop Top option and standard coach rear bed allows for sleeping of up to 6 people.

**“THIS IS MY FOURTH WESTFALIA. THE INTERIOR DESIGN STANDS OUT AND ISSOMODERN-LOOKING, PLUS I DON'T HIT MY HEAD IN THE SHOWER”**

Gerry Q.  
Hollywood, FL, USA

## 600-Amp Hours Battery Life

Powerful 600 Amp Lithium battery system supported by easy to use owner tablet syle touch control panel makes monitoring performance and managing the HVAC system, lighting, holding tanks etc as easy as using your cell phone.

X

X-FACTORS

## 30 Cu Ft of Trunk Storage

Less restrictions on what needs to stay behind. Bikes, paddleboards, hiking, mountain climbing, antiques, pack your Westfalia to supply for your most adventurous ambitions.

**“WE ARE TAKING THE LEAP. THIS IS OUR FIRST RV. WE LOVE THAT THE WAVE CAN ACCOMMODATE OUR GROWING FAMILY.”**

Stacy & Leo Mettitt  
Island, FL, USA

## 35 Gallons Of Fresh Water

Industry leading 35 gallon fresh water and 26 gallon grey water Westfalia also features the convenience of cassette waste tank system.

**“OF ALL THE UNITS WE LOOKED AT, THE FACT THAT WECOULD SLEEPNORTHSOUTH IN THE BED AND KEEP OUR BIKES INSIDE WAS THE KEY”**

Gene & Rose  
Davidson, NC, USA





YEARS OF WORRY FREE DRIVING



2 YEARS  
WARRANTY  
MODEL.  
CHASSIS.  
ROAD.



Welcome to the Westfalia family, where support isn't just a service—it's a commitment. With over 40 years of combined experience, our Customer Care team are your trusted guides, ensuring you receive best-in-class customer service that's second to none.

Our extended warranty is designed to give new Westfalia owners total peace of mind, covering manufacturer defects (excluding the chassis) for the first two years—so you can hit the road worry-free and focus on what matters: adventure.

Your Westfalia comes with a robust Promaster Chassis Warranty: a 5-year/60,000-mile or 100,000-kilometer gas powertrain limited warranty that covers repairs on all major components.

Additionally, a 3-year/36,000-mile or 60,000-kilometer limited warranty provides bumper-to-bumper coverage, ensuring every part of your vehicle is protected.

**Dealer Support:** For dealer inquiries, reach out to [dealersupport@roadtrekinc.com](mailto:dealersupport@roadtrekinc.com). For retail support, contact [retailsupport@roadtrekinc.com](mailto:retailsupport@roadtrekinc.com).

W

WARRANTY

VEHICLE

V

YOUR COMPLIMENTARY  
BENEFITS PACKAGE INCLUDES

A

AMAZING

EXTENDED

E

- ✓ **Unlimited dealer locator assistance:** In an unfamiliar territory, where do you go for service should the need arise? We'll assist in finding the closest, qualified service facility.
- ✓ **Technical support and roadside assistance:** Features 24/7 technical assistance from our staff of certified technicians who speak directly with you to troubleshoot operational issues. Should you need emergency roadside assistance, our vast network of service providers offers a wide range of services to handle your unique RV.
- ✓ **Unlimited jump-starts:** A jump-start for your vehicle's dead battery.
- ✓ **Unlimited locksmith/lockout service:** – Delivery of locksmith services to unlock your vehicle and/or obtain a replacement key. You will be responsible for all parts and labor.
- ✓ **Unlimited tire assistance:** Changing of your vehicle's flat tire using the vehicle's good mounted and inflated spare tire. If a spare is not available we may deliver a comparable tire to the disablement site (based on availability), or tow to the nearest qualified repair facility. You will be responsible for all parts, labor & disposal fees.
- ✓ **Unlimited delivery of fuel and emergency fluids:** Fuel, oil, water, transmission fluid, power steering fluid and brake fluid delivered to your disabled vehicle, as necessary to remedy the disablement. You will be responsible for the cost of the fluids.
- ✓ **Unlimited towing:** Towing your disabled vehicle to the nearest qualified repair facility.
- ✓ **Unlimited mobile mechanic:** Dispatching of a mechanic to the site of your mechanically disabled vehicle. You will be responsible for all costs.

✓ **Personal assistance/concierge services – You will have access to a full range of services to make life easier:**

- Car rental and car return
- Turn-by-turn driving directions
- Road closures, traffic and weather reports
- Pharmacy, hospital, emergency care locator service
- RV Campground referrals
- RV storage facility locators
- Wireless device assistance
- Golf course tee time reservations
- ATM & Business locators
- Ticket coordination (theater/music/sport)

2  
YEAR  
UNLIMITED  
MILEAGE  
MOTORHOME  
WARRANTY



# FROM ZION



Adventure, exploration, and a life without limitations. With a deep history in travel and outdoor exploration, Westfalia embodies the perfect blend of nostalgia and innovation, delivering premium quality, timeless vehicles that empower people to experience the open road.

From open vistas to congested streets, Westfalia gets you to your next adventure with ease — no matter the traffic conditions or how crazy the city may be.

# TO ZOO YORK







# SPECIFICATIONS

Model	Wave Skylight	Wave Pop Top	Wave SRT
Capacity			
Travel Capacity	4 w/ 2 Child Seat Anchors	4 w/ 2 Child Seat Anchors	4 w/ 2 Child Seat Anchors
Sleeping Capacity	4	6	4
Chassis			
Base Model	RAM Promaster 3500 159" EXT Van w/9 spd transmission		RAM Promaster 3500 159" Van w/9 spd transmission
Engine	3.6L Gas, V6	3.6L Gas, V6	3.6L Gas, V6
Fuel Type	Gasoline	Gasoline	Gasoline
Fuel Capacity	90.8 L/24 U.S. GAL.	90.8 L/24 U.S. GAL.	90.8 L/24 U.S. GAL.
Wheelbase	159" (4,039 mm)	159" (4,039 mm)	159" (4,039 mm)
Advanced Safety	Park Assist, Adaptive Cruise Control w/Stop & Go, Driving Assist, 360 Surround View Camera, Lane Departure Warning Plus, Blind Spot and Cross Path Detection, Collision Warning, Power Heated Mirrors, Remote Start, Tire pressure Monitoring,		
HD Radio	Uconnect 5, 10.1" Display, Voice Command, Apple Car Play, Android Auto, Wireless Charging Pad, 4G LTE WI-FI Hotspot,		
Gross Vehicle Weight Rating	9350 lbs. (4241 kg.)	9350 lbs. (4241 kg.)	9350 lbs. (4241 kg.)
Cargo Carrying Capacity (CCC) CDN	1243 lbs. (564 kg.)	992 lbs. (450 kg.)	1243 lbs. (564 kg.)
Occupant & Cargo Carrying Capacity (OCCC) US	2174 lbs. (986 KG.)	1922 lbs. (872 KG.)	1629 lbs. (739 KG.)
Gross Combined Weight Rating	11500 lbs. (5,227 kg.)	11500 lbs. (5,227 kg.)	11500 lbs. (5,227 kg.)
Dry Weight	7720 lbs. (3,175 kg.)	7920 lbs. (3,311 kg.)	7545 lbs. (3,422 kg.)
Hitch Weight Rating	3500 lbs. (1,587 kg.)	3500 lbs. (1,587 kg.)	3500 lbs. (1,587 kg.)
Tongue Weight Rating	300 lbs. (136 kg.)	300 lbs. (136 kg.)	300 lbs. (136 kg.)
Towing Capacity (Max)	1823 lbs (827 kg)	1780 lbs (807 kg)	1823 lbs (827 kg)
Exterior Length	20' 9" (6,325 mm)	20' 9" (6,325 mm)	19' 7" (6,325 mm)
Exterior Width (without mirrors)	6' 11" (2,108 mm)	6' 11" (2,108 mm)	6' 11" (2,108 mm)
Exterior Height (with roof A/C)	9' 5" (2,870 mm)	9' 5" (2,870 mm)	9' 5" (2,870 mm)
Interior Standing Height	6' 2" (1,880 mm)	6' 2" (1,880 mm)	6' 2" (1,880 mm)

**Important Information:** Westfalia is a brand of Roadtrek Inc. Roadtrek Inc. reserves the right to make changes at any time, without notice,in colors, materials, equipment, specifications and models. This booklet contains information and photos that may represent 2024 product information. This information is intended as a guide only. Please visit [www.westfalia-americas.com](http://www.westfalia-americas.com) for a complete list of specifications and options. Some pictures may include optional equipment. Some equipment may not be available on all models.

Electrical			
Coach Control System	Firefly Touch Control w/ Bluetooth & App	Firefly Touch Control w/ Bluetooth & App	Firefly Touch Control w/ Bluetooth & App
Batteries	600 AMP Lithium	600 AMP Lithium	600 AMP Lithium
Under-Hood Generator	Included	Included	Included
Inverter	3000-Watt Power Inverter	3000-Watt Power Inverter	3000-Watt Power Inverter
Solar	300 W	200 W	300 W
External Power Connection	110 V/ 30 AMP with detachable power cord	110 V/ 30 AMP with detachable power cord	110 V/ 30 AMP with detachable power cord
Detectors	Smoke, Propane and CO	Smoke, Propane and CO	Smoke, Propane and CO
Holding Tanks			
Fresh Water Capacity	145 L/35 U.S. GAL.	145 L/35 U.S. GAL.	145 L/35 U.S. GAL.
Black Water Capacity	18 L/4.76 U.S. GAL.	18 L/4.76 U.S. GAL.	18 L/4.76 U.S. GAL.
Gray Water Capacity	99L/26 U.S. GAL.	99L/26 U.S. GAL.	99L/26 U.S. GAL.
Sewage Disposal System	Cassette Toilet 4.76 g	Cassette Toilet 4.76 g	Cassette Toilet 4.76 g
HVAC			
Water System	Truma LP Combi, Eco Plus 14,300 BTU/h + 1.7 kW with 110v		
Furnace			
A/C	Truma Aventa Eco Roof Mount Air Conditioning, 13,500 BTU	110 V, 13,500 BTU roof mount	Truma Aventa Eco Roof Mount Air Conditioning, 13,500 BTU
Propane	25L/30LB LP Tank w/ Exterior Quick Connect	25L/30LB LP Tank w/ Exterior Quick Connect	25L/30LB LP Tank w/ Exterior Quick Connect
Kitchen			
Dining	Front	Front	Front
Interior Galley Aisle Width	16 3/4" - 23 3/4"	16 3/4" - 23 3/4"	16 3/4" - 23 3/4"
Galley	Solid surface countertop with pop-out extension, combo stainless steel 2 burner/sink with cover.		
Adjustable Table	Adjustable Swivel Table	Adjustable Swivel Table 12	Adjustable Swivel Table
Refrigerator	12 V, 3.2 CU FT. Compressor 110 V,	V, 3.2 CU FT. Compressor	12 V, 3.2 CU FT. Compressor 110 V,
Microwave	20 L/0.7 CU FT., 700W	110 V, 20 L/0.7 CU FT., 700W	20 L/0.7 CU FT., 700W
Stove- Propane (Standard)	Two burners recessed with flush cover and built-in igniter	Two burners recessed with flush cover and built-in igniter	Two burners recessed with flush cover and built-in igniter
Stove- Induction (Optional)	Single Induction Stove, Replaces Sink/Stove Combo	Single Induction Stove, Replaces Sink/Stove Combo	Single Induction Stove, Replaces Sink/Stove Combo
Bathroom	Wet bath with cassette toilet, sink and shower	Wet bath with cassette toilet, sink and shower	Wet bath with cassette toilet, sink and shower
Outdoor Shower	Included	Included	Included
Sleeping			
Rear Sleeping KING (wxi)	71" x 69" or 80" (1803.4mm x 1752mm or 2032mm) Asymmetrical w/ opt Centre Aisle Bed Cushion Extension	71" x 69" or 80" (1803.4mm x 1752mm or 2032mm) Asymmetrical w/ opt Centre Aisle Bed Cushion Extension	72" x 55" or 66" (1803.4mm x 1387mm or 1667mm) Asymmetrical w/ opt Centre Aisle Bed Cushion Extension
Rear Sleeping QUEEN (wxi)	Multiple Bed Configurations	Multiple Bed Configurations	Multiple Bed Configurations
Front Combination Bench/Bed	39"x69" (990mm x 1752mm)	39"x69" (990mm x 1752mm)	39"x69" (990mm x 1752mm)
Pop Top Mattress	N/A	52"x79" (1321mm x 2007mm)	N/A
Pop Top Area	N/A	Ladder, Adjustable brightness LED light strip, 2 USB Ports, Zipper Window/ Screens & Venting Skylight	N/A
Storage			
Cabinets/Drawers	17	17	17
Interior Trunk Dimensions	61.7" L x 28.2" D x 29.8" H (1567.18mm x 716.28mm x 756.92) 30 Cu Feet	61.7" L x 28.2" D x 29.8" H (1567.18mm x 716.28mm x 756.92) 30 Cu Feet	61.7" L x 14.2" D x 29.8" H (1567.18mm x351.28mm x 756.92) 15 Cu Feet
Media			
Entertainment	USB charge ports for your devices	USB charge ports for your devices	USB charge ports for your devices
Exterior			
Steps	Power step at coach entry	Power step at coach entry	Power step at coach entry
Interior Windows	10	10	10
Skylight	1 - 17"x25" (431mm x 635mm)	N/A	1 - 17"x25" (431mm x 635mm)
Awning	13' Power	13' Power	13' Power
Screen Package	Heavy-duty multi-function bug screens for rear and sliding screen passenger side door		
Warranty			
RV Warranty	Two (2) year comprehensive, unlimited mileage warranty. Please contact your nearest Roadtrek dealer for complete details.		
Chassis Warranty	5-year/60,000-mile or 100,000-kilometer Gas Powertrain Limited Warranty covering the cost of repairs on all covered powertrain components - engine, transmission and drive system for most new Ram vehicles. 3-year/36,000-mile or 60,000 kilometer Limited Warranty, provides bumper-to-bumper coverage of your vehicle, from the body to the electrical system. Refer to chassis manufacturer's website for complete details.		





©Westfalia North Americas Copyright  
2025 For additional information, product  
support, dealer brand management visit  
our website.

[www.Westfalia-Americas.com](http://www.Westfalia-Americas.com)